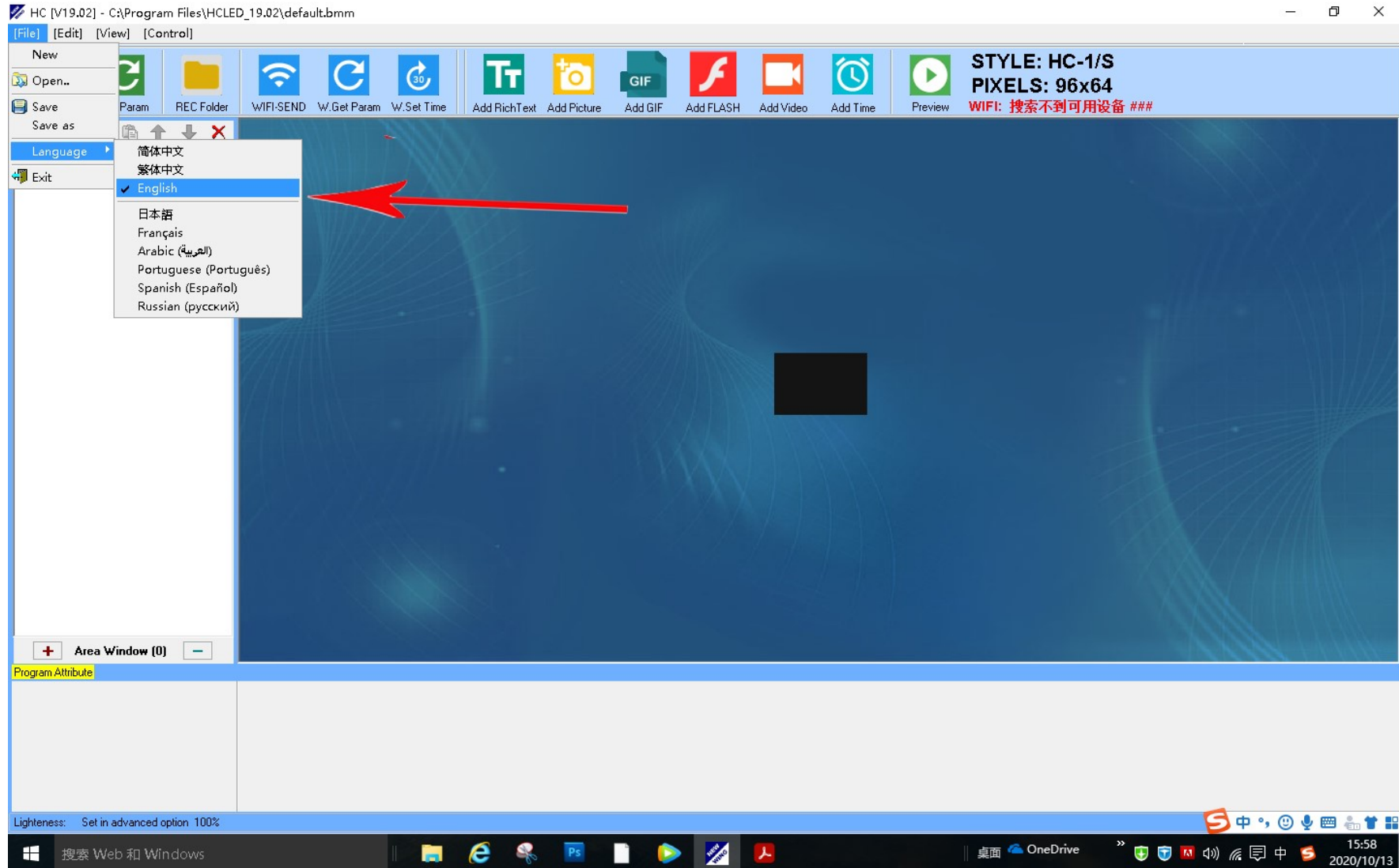
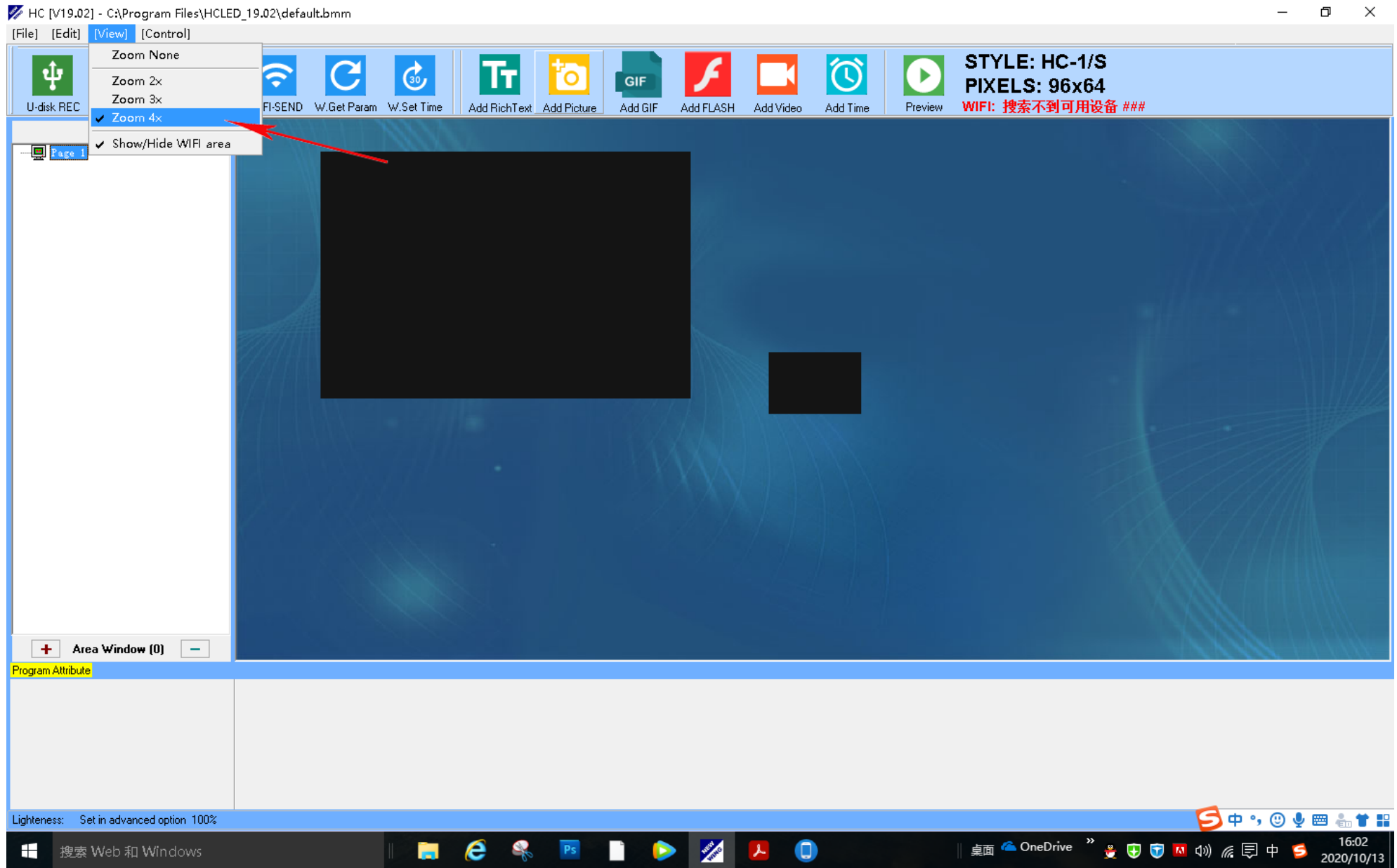


LED Sign Instruction

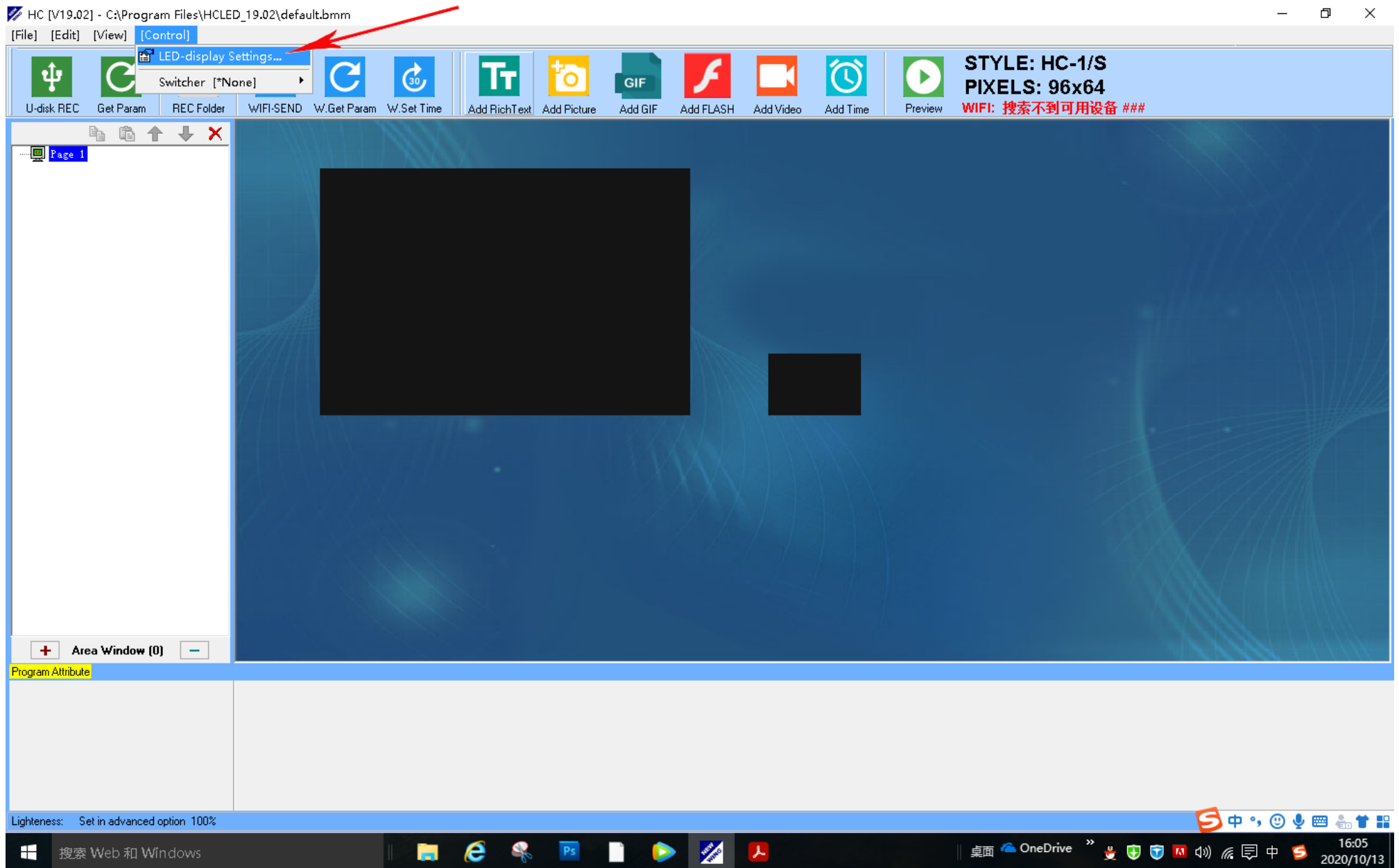
1. Choose the language



2. Zoom display window



3. Find the setting. (Control→LED-display Setting)



4. Input password:168

HC [V19.02] - C:\Program Files\HCLED_19.02\default.bmm

[File] [Edit] [View] [Control]

U-disk REC Get Param REC Folder WIFI-SEND W.Get Param W.Set Time Add RichText Add Picture Add GIF Add FLASH Add Video Add Time Preview

STYLE: HC-1/S
PIXELS: 96x64
WIFI: 搜索不到可用设备 ###

LED-Display Settings [V19.02]

[00] HC-1/S (Animation)

Width: 96
Height: 64
Data dire.: 0-Right to Left
Special: None
Sequencer: (0) R->R, G->G, B->B
DATA: 0-In-phase
OE: 0-Low, Normal
138 decoder: with 138 decoder
Speed: 0
 Enable switch program by button
Advanced option

ALL Spacing: P10 Scan: ALL Scan Size: ALL Size Interface: ALL Interface 6/20

(000) - ****Custom****
(011)_scan08_P10_beeline_16x16_Hub75.dot
(018)_scan08_HLL-MP10_mentou_fullcolor_32x16.dot
(033)_scan04_P10_LEDstick_4fold,8columns,+Stream,-Z_32x16_Hub08.dot
(034)_scan04_P10_2fold,8columns,+Stream,+Z_16x16_Hub75.dot
(035)_scan04_P10_2fold,8columns,+Stream,-Z_16x16_Hub75.dot
(036)_scan04_P10_2fold,8columns,+Stream,+S_16x16_Hub75.dot
(037)_scan04_P10_2fold,8columns,+Stream,-S_16x16_Hub75.dot
(038)_scan04_P10_2fold,8columns,-Stream,+Z_16x16_Hub75.dot
(039)_scan04_P10_2fold,8columns,-Stream,-Z_16x16_Hub75.dot
(040)_scan04_P10_2fold,8columns,-Stream,+S_16x16_Hub75.dot
(041)_scan04_P10_2fold,8columns,-Stream,-S_16x16_Hub75.dot
(042)_scan04_P10_bicolor_32x16_Hub12.dot
(043)_scan04_HLL_P10_16X16.dot
(044)_scan04_P10_32x16_Hub75.dot
(097)-P10_HJCL_[HJCLPCB-P10-3525-4S-01](Scan4_Hub75,32x16)_no138.dot
(098)-P10_liangcai(Scan4_Hub75,32x16)_no138.dot
(Z05)HLL_MP10_scan02_32x16_180327.dot
(Z06)YLR_P10_scan04_32x16.dot
(ZZZ)-P10_scan02_180207_[PH10-3525-S2-RGB-V12].dot

---> Grid wiring Refresh list Wiring folder

1 Pass *** 2 OK

pass words:168

[WIFI]Send Param [WIFI]Get Param [WIFI]Smart-Setting [U-disk]Set Param [U-disk]Smart-Setting Save/Confirm

Lightness: Set in advanced option 100%

5. Choose right display screen parameters.

HC [V21.05] - C:\Users\Administrator\Desktop\HCLD_21_05_green\default.bmm

文件(F) 编辑(E) 视图(V) 控制(C)

U盘发送 U盘回读 录制目录 WIFI-发送 WIFI-回读 WIFI-校时 添加文字 添加图片 添加GIF 添加视频 添加时钟 预览

型号: HC-3,3S
像素: 96x16
WIFI: 搜索不到可用设备 ##

LED显示屏设置 [V21.05]

节目套1

- 主窗口 (1)
 - 文字 - 021811
- 副窗口 (1)
 - 文字 - 021811

[04] HC-3,3S (U盘,WIFI)

屏宽 (点) 96

屏高 (点) 16

数据方向: (0)右到左 (横)

增高加长: (0)无

RGB排序: (0)R->R, G->G, B->B

DATA: 0-同相

DE: 0-低电平正常

行芯片: (0)有138行译码

列芯片: (0)-595, 5026

高度等级: 80%

高级选项

全部 点距: P10 扫描: 全部扫描 尺寸: 全部尺寸 接口: 全部接口 7/11

(000) - ****自定义****

- (003)_8扫-01_P10_直线_16x16_Hub75.dot
- (035)_04扫_P10_2折8点折正流逆Z_16x16_Hub75.dot
- (A05)_2扫_HLL_MP10_32x16_180327.dot
- (A06)_2扫_P10_32x16_Hub75_no138.dot
- (A07)_2扫_P10_180207_[PH10-3525-S2-RGF_V12].dot
- (A11)_4扫-YLR_P10_32x16.dot
- (A12)_4扫_HLL_P10 [2折,8点折,顺Z,反流,16x16_Hub75_no138].dot
- (A13)_4扫_P10海佳彩亮[HJCLPCB-P10-3525-4S-01]_32x16_Hub75_no138.dot
- (A14)_4扫_P10亮彩(32x16_Hub75)_no138.dot
- (A21)_8扫-HLL-MP10|门头全彩32x16.dot

--> 查看走线 刷新列表 走线文件夹

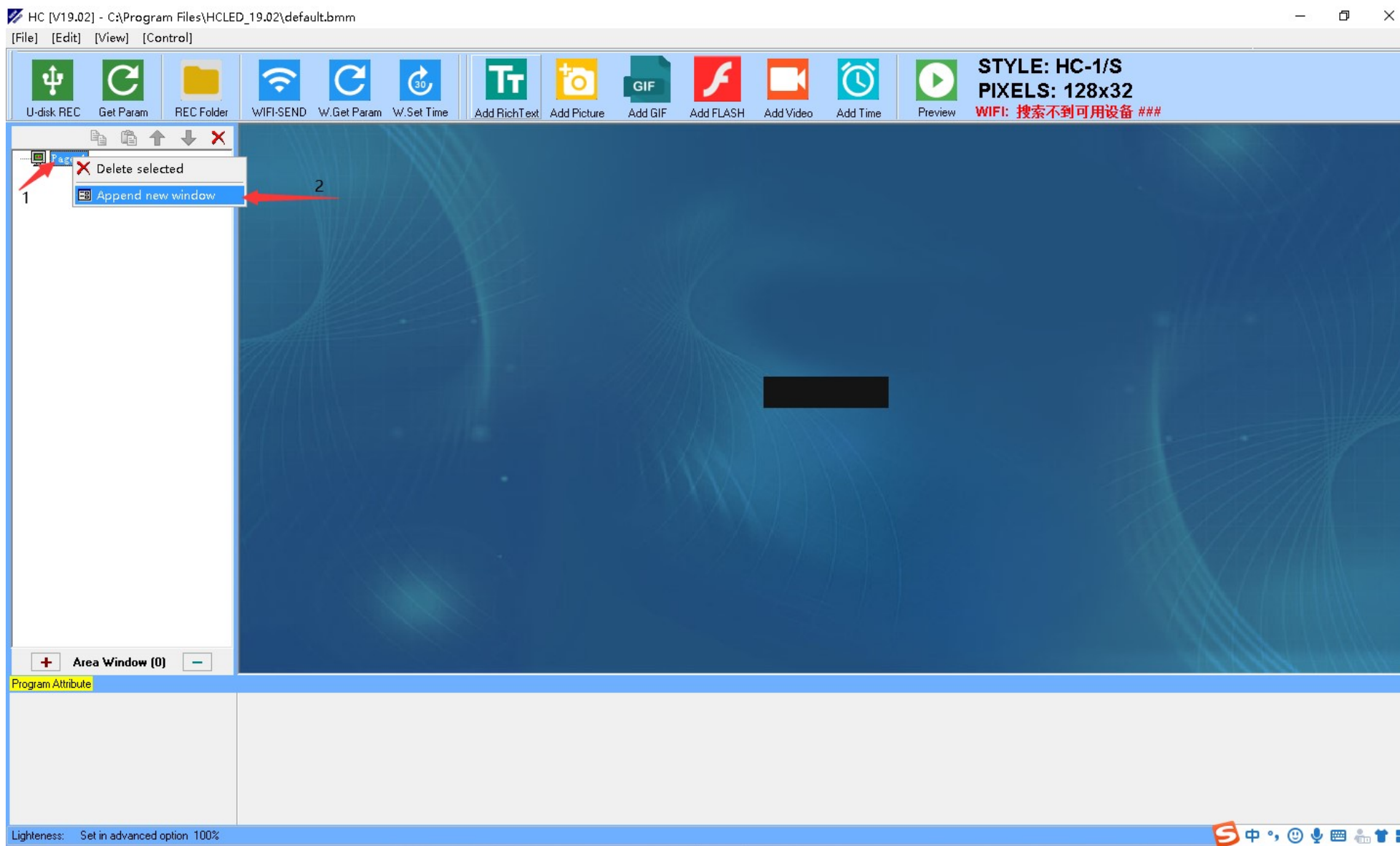
分区设置(2)

节目属性

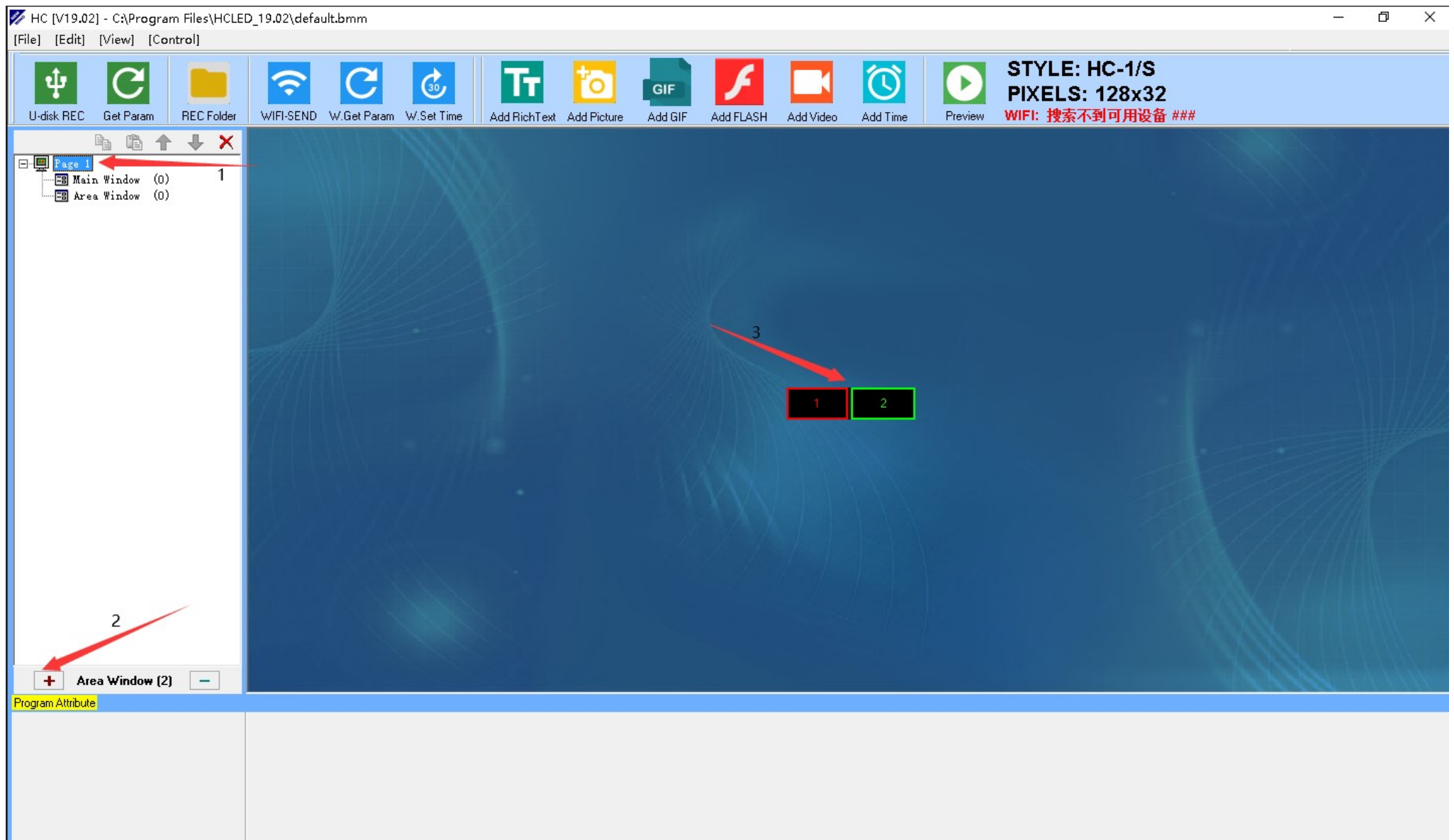
(WIFI)传卡参数 (WIFI)回读参数 (WIFI)快捷设置 (U盘)快捷设置 (U盘)改卡参数 保存/确定

6.

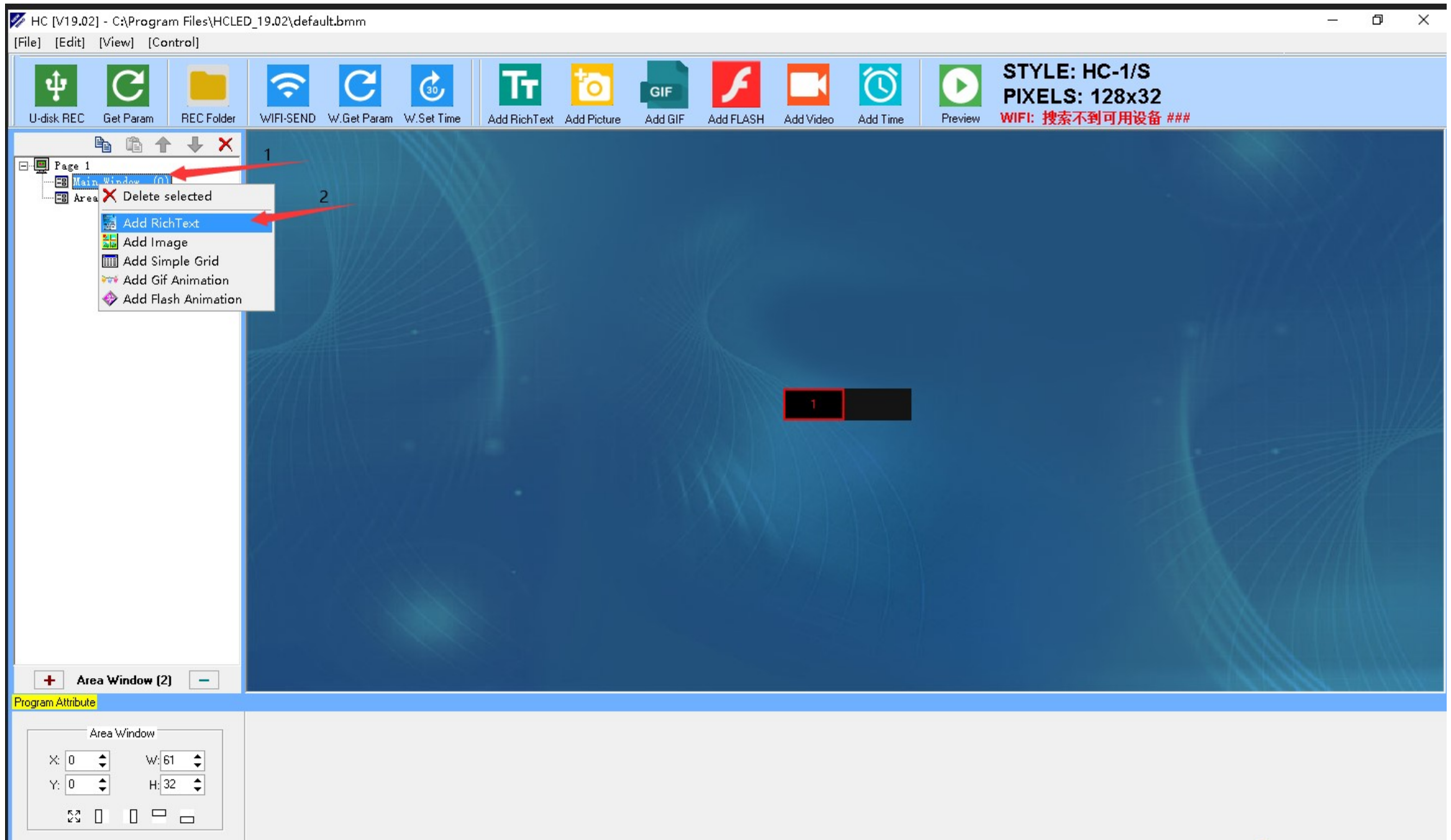
(1). Append a new window



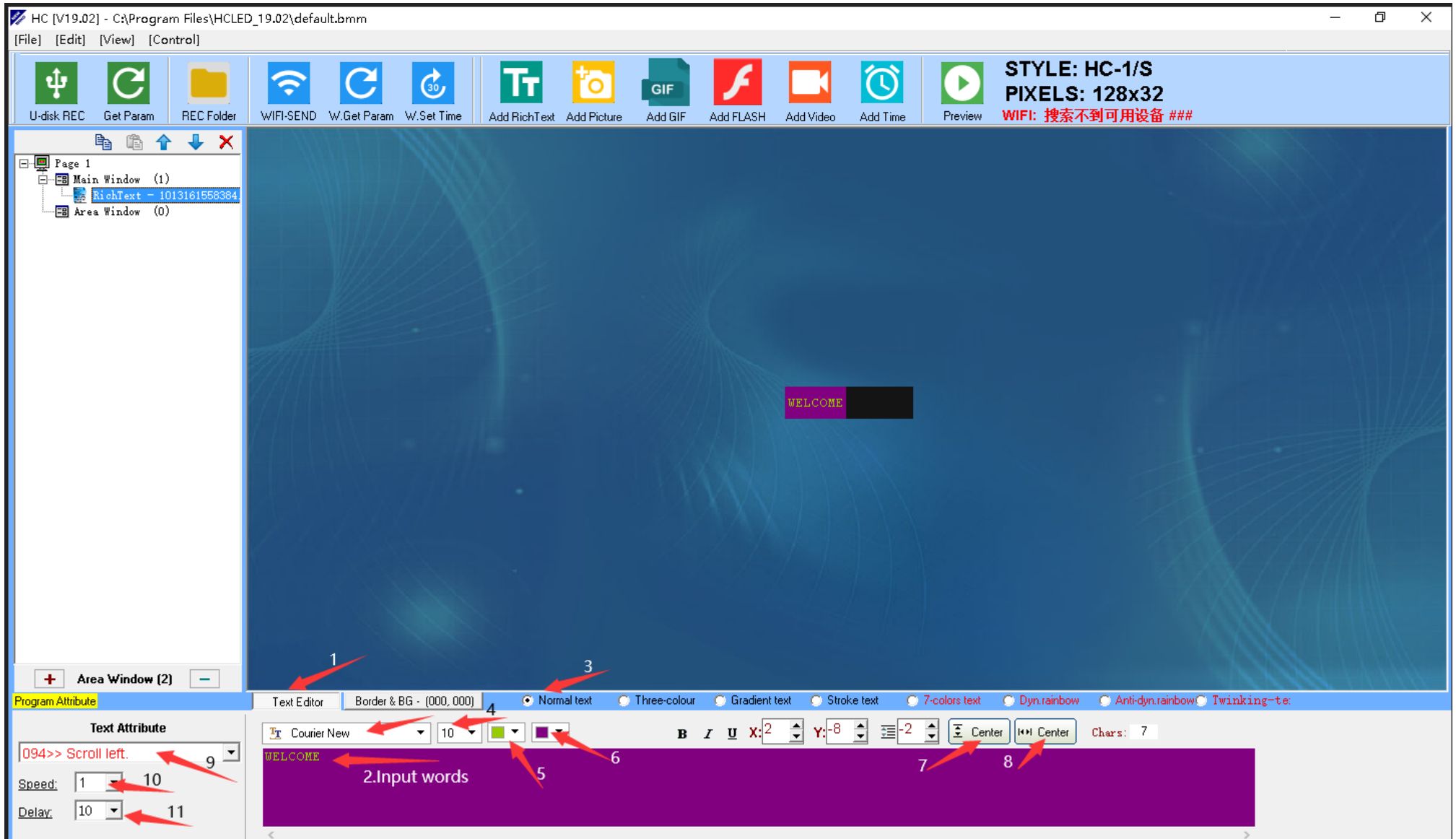
(2) you can add more winds for different display



7. Add text or picture or others.



8.Input words and choose the parameters for texts or pictures, then preview (1).



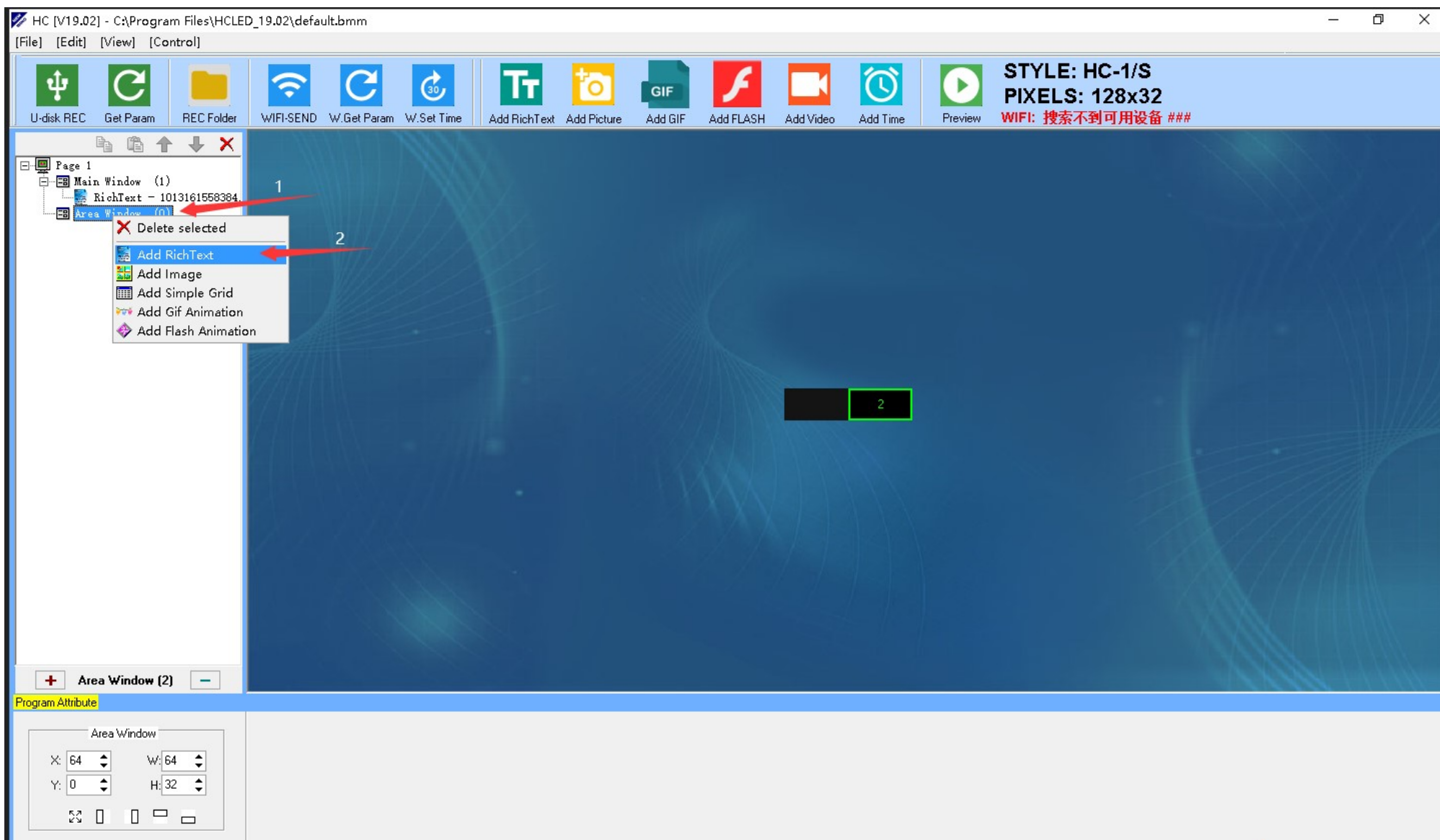
(2).

The screenshot shows a software application window titled "HC [V19.02] - C:\Program Files\HCLED_19.02\default.bmm". The interface is divided into several sections:

- Toolbar:** Contains icons for U-disk REC, Get Param, REC Folder, WIFI-SEND, W.Get Param, W.Set Time, Add RichText, Add Picture, Add GIF, Add FLASH, Add Video, Add Time, and Preview. A status bar on the right indicates "STYLE: HC-1/S", "PIXELS: 128x32", and "WIFI: 搜索不到可用设备 ###".
- Left Panel:** A tree view showing a hierarchy: Page 1 > Main Window (1) > RichText - 1013161568384 > Area Window (0).
- Main Canvas:** A large blue area with a central black box containing the word "WELCOME" in yellow.
- Bottom Panel:** A control panel with several tabs and settings:
 - Text Attribute (8):** A dropdown menu showing "094>> Scroll left.", with "Speed" set to 1 (9) and "Delay" set to 10 (10).
 - Flow border (2):** Settings for "Style" (007), "Direction" (002), and "Speed" (1) (4).
 - Background (6):** Settings for "Follow the text" (6), "Full Size" (7), and "L [0] top left" (7).
 - Brightness (5):** A slider for "B-Brightness" set to 100%.
 - Preview:** A small window showing a preview of the content with a "10 / 24" indicator.

Red arrows are used to highlight specific controls: arrow 1 points to the "Area Window (2)" button; arrow 2 points to the "Style" dropdown; arrow 3 points to the "Direction" dropdown; arrow 4 points to the "Speed" input; arrow 5 points to the "B-Brightness" slider; arrow 6 points to the "Follow the text" dropdown; arrow 7 points to the "Full Size" dropdown; arrow 8 points to the "Text Attribute" dropdown; arrow 9 points to the "Speed" input; and arrow 10 points to the "Delay" input.

(3).



(4).

HC [V19.02] - C:\Program Files\HCLED_19.02\default.bmm

[File] [Edit] [View] [Control]

U-disk REC Get Param REC Folder WIFI-SEND W.Get Param W.Set Time Add RichText Add Picture Add GIF Add FLASH Add Video Add Time Preview

STYLE: HC-1/S
PIXELS: 128x32
WIFI: 搜索不到可用设备 ###

Page 1
Main Window (1)
RichText - 1013161558384
Area Window (1)
RichText - 1013162601948

Area Window (2)

Program Attribute

Text Editor Border & BG - (018, 015) Normal text Three-colour Gradient text Stroke text 7-colors text Dyn.rainbow Anti-dyn.rainbow Twinking-te

Text Attribute

黑体 10 4

094>> Scroll left.

Speed: 1

Delay: 10

2.Input words

RGB SIGN

Center Center

Chars: 8

11

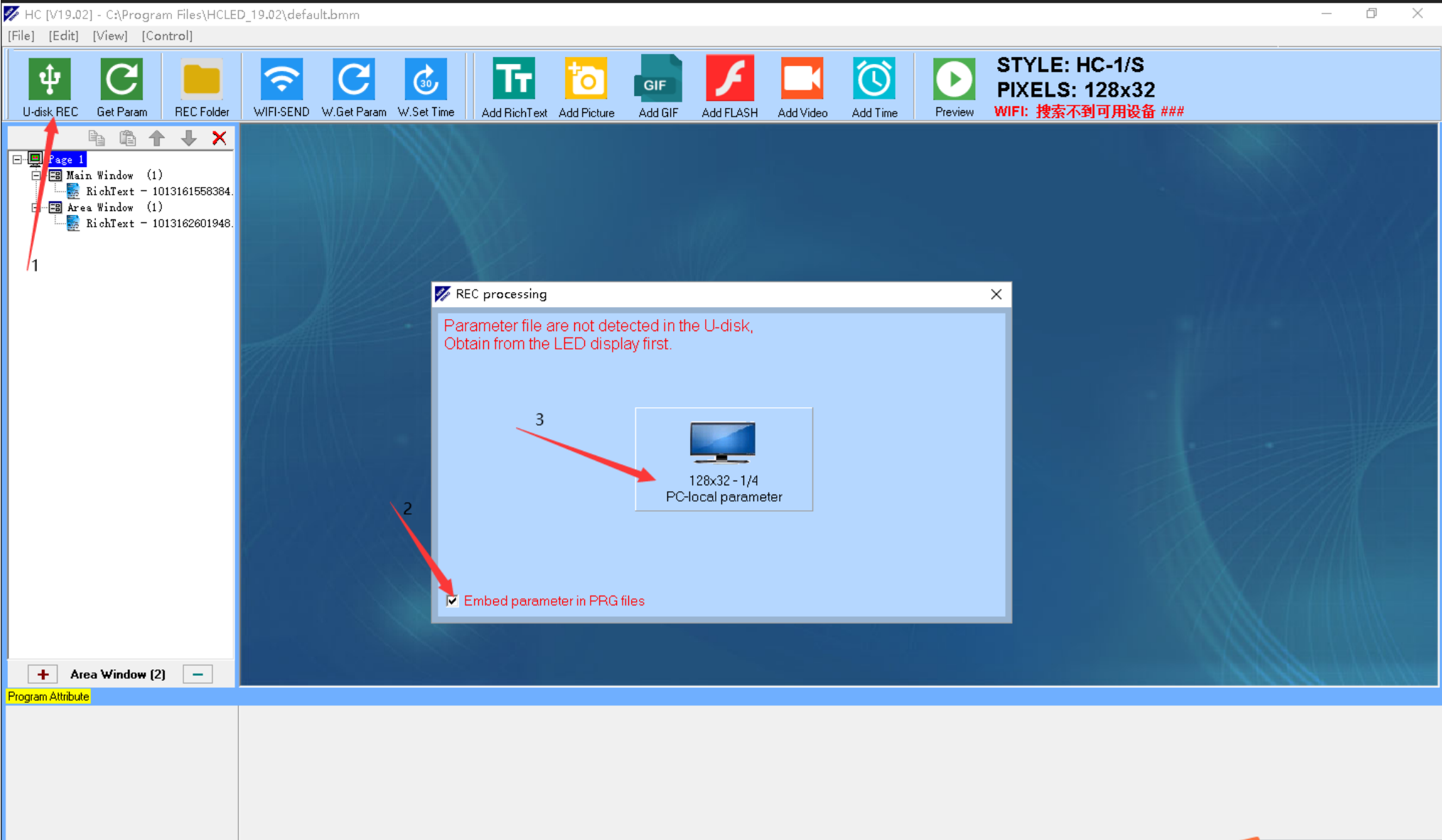
1 2 3 4 5 6 7 8 9 10

屏幕截
屏幕录
屏幕识
屏幕翻
截图时

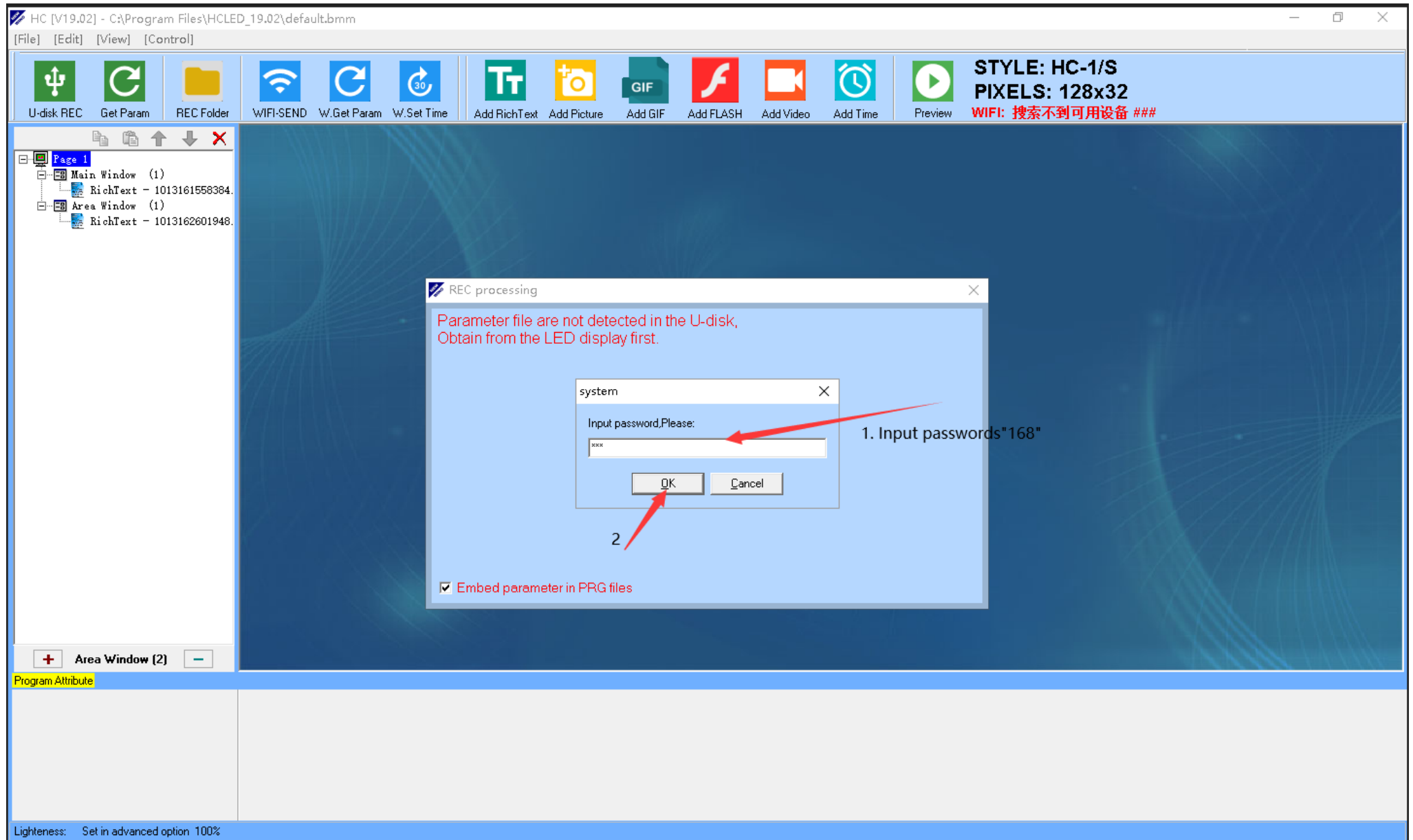
9. Stop previewing



10. Import data into the U disk



11.The first import of data needs passwords “168”. Then wait for 10~15 seconds



12. Connect U disk with display, the display will show “loading” firstly, then show “OK”.

Disconnect U disk with display

